


Dell Pro Wired Mouse MS3220


User's Guide


Regulatory model: MS3220t

DELLTechnologies

Notes, Cautions, and Warnings

 **NOTE:** A NOTE indicates important information that helps you make better use of your computer.

 **CAUTION:** A CAUTION indicates potential damage to hardware or loss of data if instructions are not followed.

 **WARNING:** A WARNING indicates a potential for property damage, personal injury, or death.

© 2019-2024 Dell Inc. or its subsidiaries. All rights reserved. Dell, EMC, and other trademarks are trademarks of Dell Inc. or its subsidiaries. Other trademarks may be trademarks of their respective owners.

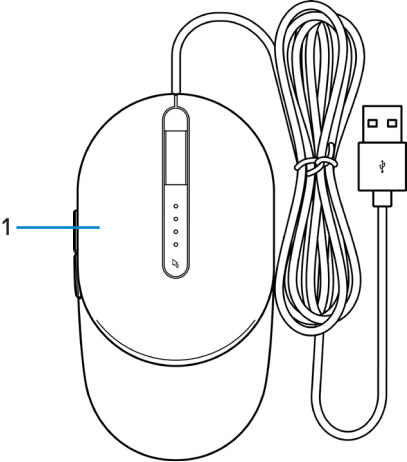
2024-10

Rev. A02

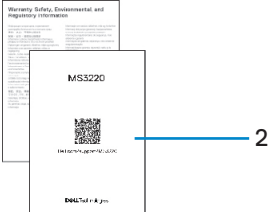
Contents

Notes, Cautions, and Warnings.....	2
What's in the box	4
Features	5
Top and side view	5
Bottom view	6
Dell Display and Peripheral Manager.....	7
Setting up your mouse	8
Connecting the mouse.....	8
Adjusting the DPI.....	8
Specifications	10
General.....	10
Electrical	10
Physical characteristics.....	10
Environmental.....	11
Troubleshooting.....	12
Statutory Information.....	14
Warranty	14
Limited warranty and return policies	14
For U.S. customers:	14
For European, Middle Eastern and African customers:	14
For non-U.S. customers:	14

What's in the box



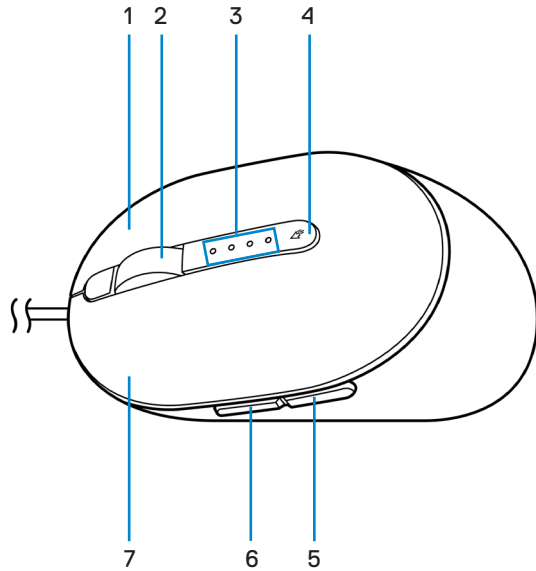
1 Mouse



2 Documents

Features

Top and side view



1 Right button

2 Scroll wheel

3 DPI indicators

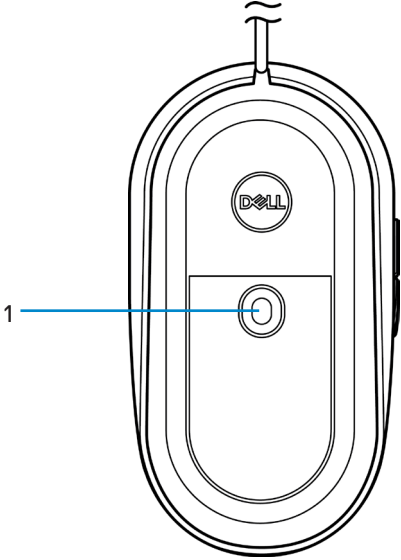
4 DPI adjustment button

5 Backward button

6 Forward button

7 Left button

Bottom view



1 Laser sensor

Dell Display and Peripheral Manager

Dell Display and Peripheral Manager is an app that helps you set up and configure your Dell monitors and peripherals. With this app you can:

- Assign shortcuts to programmable buttons of your mouse through the Button Customization tab. You can even set shortcuts specific to an app with App specific settings.
- View device information such as firmware version and battery status for wireless devices.
- Configure DPI setting and set primary mouse button.
- Upgrade to the latest firmware for your device.

Installing Dell Display and Peripheral Manager

When you connect the device to your computer for the first time, you may be prompted to download and install the app.

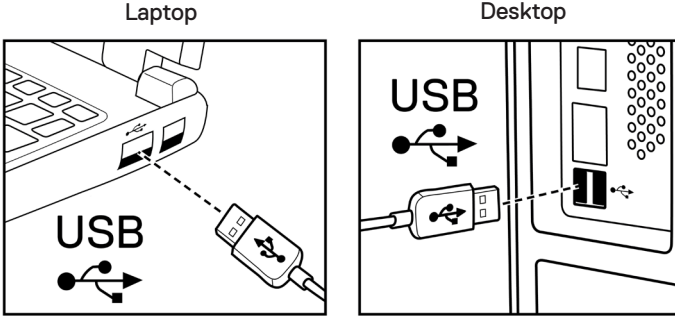
NOTE: If the download prompt does not appear within a few minutes, you can manually install the software from Drivers & Downloads tab on [www.dell.com/ support/ms3220](http://www.dell.com/support/ms3220).

For more details, please refer to *Dell Display and Peripheral Manager User Guide* in the documentation tab.

Setting up your mouse

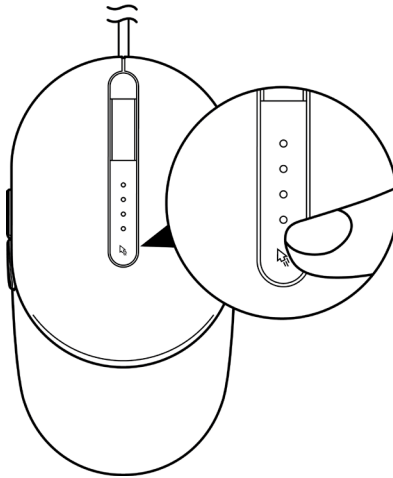
Connecting the mouse

Connect the mouse USB cable to an available USB A port on your laptop or desktop.

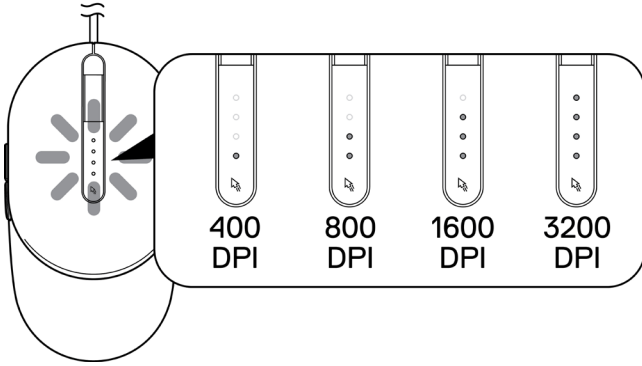


Adjusting the DPI

Press the DPI adjustment button repeatedly to toggle between mouse tracking resolutions.



DPI setting is indicated by the number of DPI indicator lights that are illuminated. The default four DPI settings and their indicator lights are as follows:



Specifications

General

Model number	MS3220
Connection type	Wired USB 2.0
Operating system	<ul style="list-style-type: none">• Chrome• Windows XP• Windows Vista (test only)• Windows 7, 32/64-bit• Windows 8, 32/64-bit• Windows 10, 32/64-bit• Windows 11• Windows Server 2003• Windows Server 2008; 2008 R2• Windows Server 2012; 2012 R2• Linux 6.x, Ubuntu, Neokylin• Free-DOS

Electrical

Operating voltage	DC 5 V, 0.1 A
-------------------	---------------

Physical characteristics

Weight (with cable)	< 120 g (< 0.26 lb)
Dimensions:	
Length	142 mm (5.59 in.)
Width	91 mm (3.58 in.)
Height	46.5 mm (1.83 in.)

Environmental

Temperature:

Operating

-10°C to 50°C (14°F to 122°F)

Storage

-40°C to 65°C (-40°F to 149°C)

Storage humidity

95% maximum relative humidity;
non-condensing

Troubleshooting

Problems	Possible solutions
Mouse is not functioning	<ol style="list-style-type: none">1 Connect the mouse USB cable to another USB port. A notification may appear indicating that the driver installation is in progress. If so, wait until a notification appears indicating that the drivers are installed before you use the mouse.2 Restart your computer.
Resolving cursor issues	<ol style="list-style-type: none">1 Connect the mouse USB cable to another USB port. A notification may appear indicating that the driver installation is in progress. If so, wait until a notification appears indicating that the drivers are installed before you use the mouse.2 Ensure that the laser sensor is not obstructed or dirty.3 Glass or other very smooth glossy surfaces are not suitable for the mouse sensor to capture movement. Using a dark colored fabric mouse pad can improve the tracking.4 Save any data, close any open program(s), and then restart your laptop/desktop. When you do not have another mouse or touchscreen, you may have to hold the power button for at least 15 seconds to turn your laptop/desktop off. You may lose any unsaved data.
Resolving mouse button issues	<ol style="list-style-type: none">1 Ensure that there is nothing preventing the mouse buttons from moving.2 Connect the mouse USB cable to another USB port. A notification may appear indicating that the driver installation is in progress. If so, wait until a notification appears indicating that the drivers are installed before you use the mouse.3 Save any data, close any open program(s), and then restart your laptop/desktop. When you do not have another mouse or touchscreen, you may have to hold the power button for at least 15 seconds to turn your laptop/desktop off. You may lose any unsaved data.4 In Dell Display and Peripheral Manager, reset the side button actions to their factory defaults.

Solving a slow moving cursor

- 1 Ensure that the laser sensor is not obstructed or dirty.
- 2 Modify the mouse DPI setting.
- 3 Change the mouse settings to adjust the pointer speed.
Click on the tab that matches the Operating System (OS) installed on your laptop/desktop and perform the steps within that section to change the settings.
 - In the **Search box**, type `main.cpl`.
 - Click or tap `main.cpl` in the list of programs.
 - Move the slider under **Select a Pointer Speed** to adjust the cursor speed to the desired level.
 - Click or tap **OK**.

Dell Display and Peripheral Manager software features not working as intended.

The features supported by Dell Display and Peripheral Manager are dependent on the operating system and the processor of your computer. See documentation for Dell Display and Peripheral Manager at www.dell.com/support/ddpm for more information.

Statutory Information

Warranty

Limited warranty and return policies

Dell-branded products carry a three-year limited hardware warranty. If purchased together with Dell system, it will follow the system warranty.

For U.S. customers:

This purchase and your use of this product are subject to Dell's end user agreement, which you can find at [Dell.com/terms](https://www.dell.com/terms). This document contains a binding arbitration clause.

For European, Middle Eastern and African customers:

Dell-branded products that are sold and used are subject to applicable national consumer legal rights, the terms of any retailer sale agreement that you have entered into (which will apply between you and the retailer) and Dell's end user contract terms.

Dell may also provide an additional hardware warranty – full details of the Dell end user contract and warranty terms can be found by going to [Dell.com/terms](https://www.dell.com/terms), selecting your country from the list at the bottom of the “home” page and then clicking the “terms and conditions” link for the end user terms or the “support” link for the warranty terms.

For non-U.S. customers:

Dell-branded products that are sold and used are subject to applicable national consumer legal rights, the terms of any retailer sale agreement that you have entered into (which will apply between you and the retailer) and Dell's warranty terms. Dell may also provide an additional hardware warranty – full details of Dell's warranty terms can be found by going to [Dell.com](https://www.dell.com), selecting your country from the list at the bottom of the “home” page and then clicking the “terms and conditions” link or the “support” link for the warranty terms.